

燃料電池

Vol.9
No.2

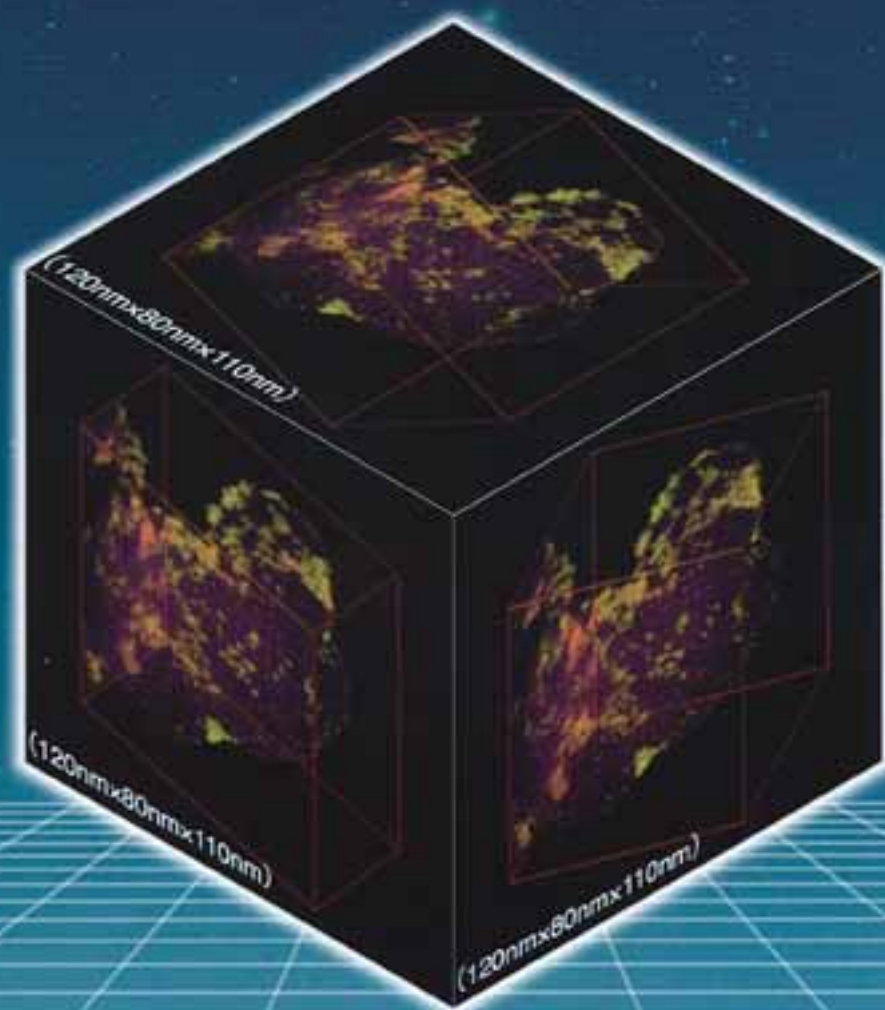
Autumn 2009

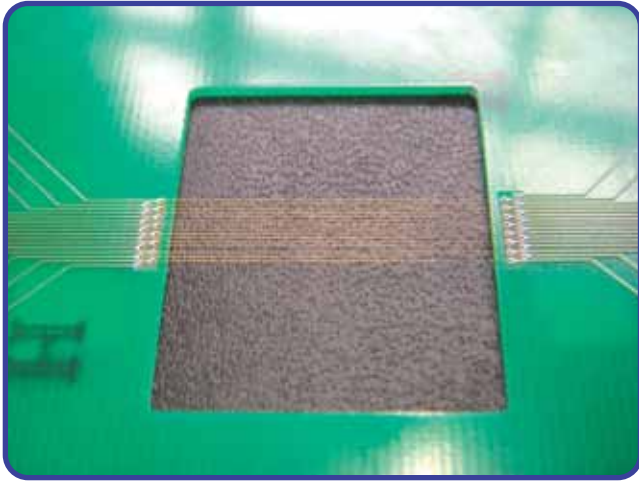
秋号

The Journal of Fuel Cell Technology

巻頭言 エネファーム商用化と産官学連携

特集 PEFCの特性予測・観測・評価





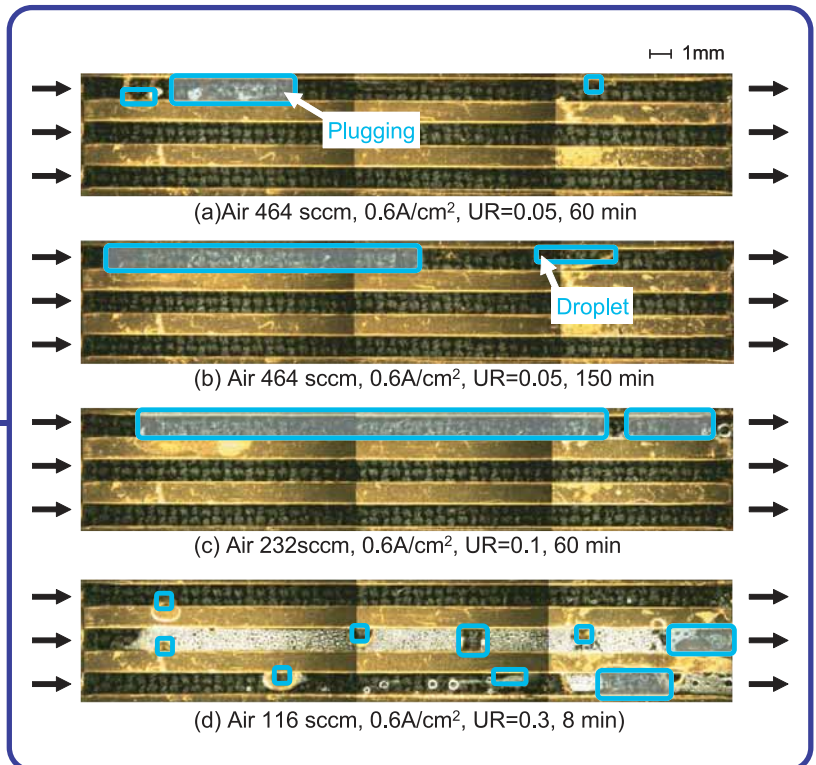
電圧計測用プローブ
(早稲田大学、日産自動車)

Voltage Sensing Probe
(Waseda University and Nissan Motor)

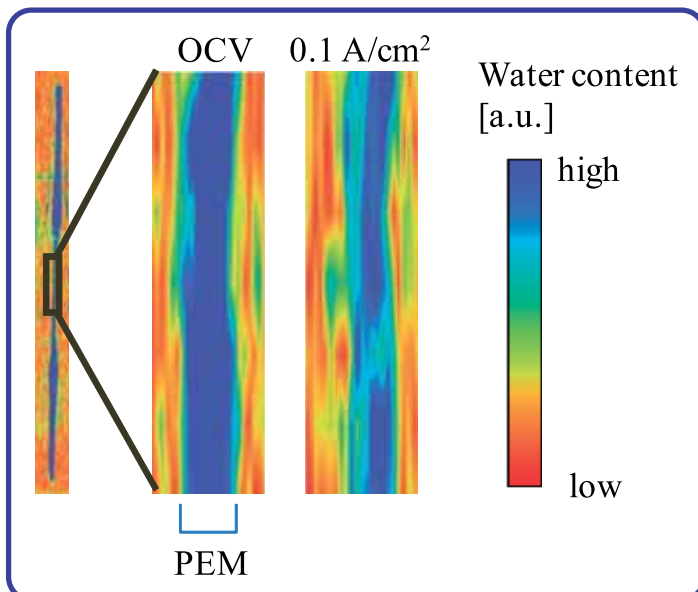
P35 参照

負荷電流 0.6 A/cm^2 における
並行3流路の可視化画像
(九州大学)

Visualized Images of Parallel 3
Channel Cell under Same Load-
current of 0.6 A/cm^2
(Kyushu University)



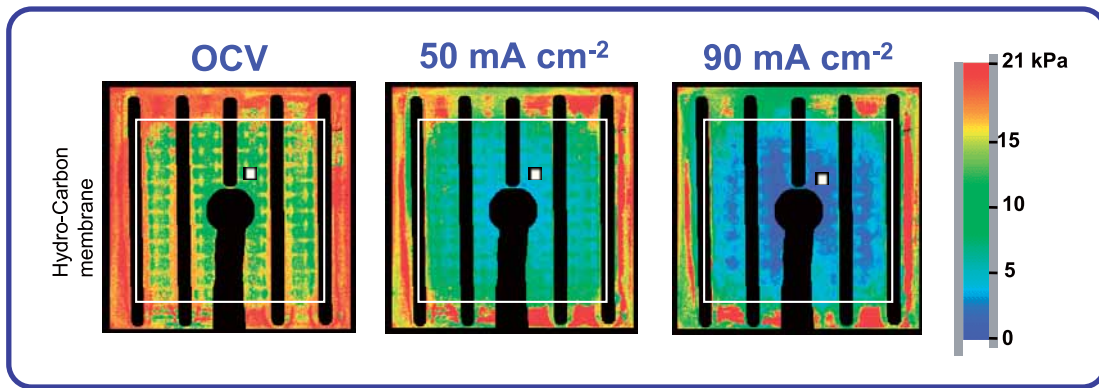
P59 参照



発電時における電解質膜内水分濃度
分布の高分解能MRI計測結果
(東京工業大学)

High Resolution MRI Visualization on
Transversal Water Content Distribution
in PEM under an Operational PEFC
(Tokyo Institute of Technology)

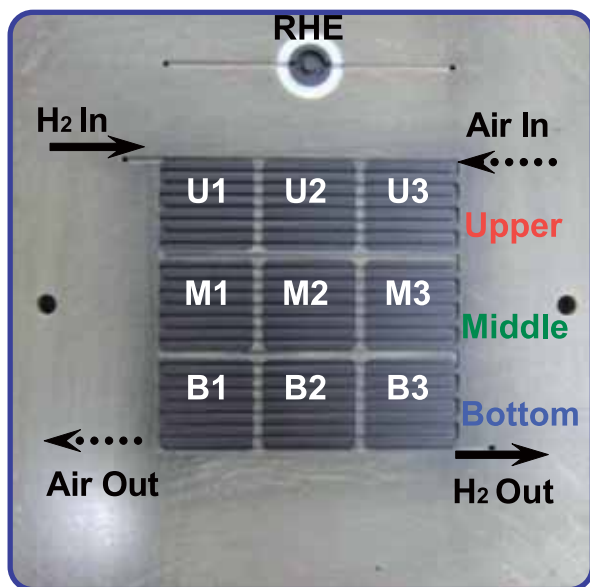
P64 参照



P76 参照

DMFC 運転時の酸素濃度分布 (島津製作所)

Oxygen Distribution in DMFC Operation (Shimadzu)



電流分布測定用分割セパレータ
(東京都市大学)

Segmented Separator used to measure
Current Distribution
(Tokyo City University)

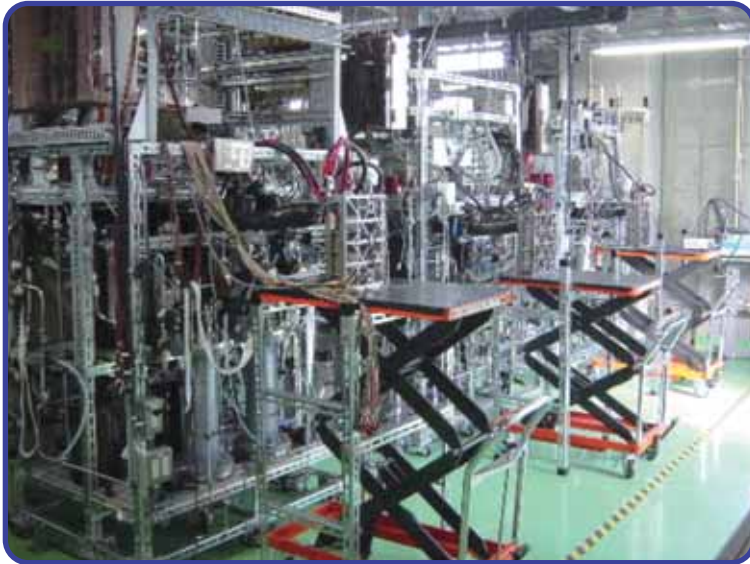
P83 参照

多孔体流路セパレータ
(北海道大学)

Porous Separator
(Hokkaido University)



P100 参照



水電解・燃料電池一体型セル性能
評価装置
(高砂熱学工業、産総研、アタカ大機)

Experimental Equipments of
Utilized Reversible Cell
(Takasago Thermal Engineering,
AIST and Daiki-Ataka Engineering)

P105 参照

COA-MIB システムラボ試験装置
(神戸製鋼所)

Laboratory Apparatus of
COA-MIB System
(Kobe Steel)



P111 参照



ガラス/セラミック複合ガスシール材
(ファインセラミックスセンター)

Glass/Ceramic Composite Seal
(Japan Fine Ceramics Center)

P125 参照

The Journal of Fuel Cell Technology

Contents

Foreword

- EneFarm Commercialization and Industry–Government–Academia Collaboration
H. Watanabe - Tokyo Gas Co., Ltd. 1

Special Issue Prediction, Observation and Evaluation of Characteristics of PEFC

- Numerical Simulation of Mass and Heat Transport in Polymer Electrolyte Fuel Cell
N. Oshima, Y. Tabe, E. Kurihara and L. K. SAHA - Hokkaido University 6
- Flow Structure in the Channel Flow of PEFC and its Mathematical Modeling
M. Kaneda and K. Suga - Osaka Prefecture University 13
- Theoretical Analysis of Fuel Cell Performance based on Experiment Integrated Multi-scale Computational Chemistry
H. Takaba, A. Suzuki, H. Tsuboi, N. Hatakeyama, A. Endou
M. Kubo and A. Miyamoto - Tohoku University 18
- Chemical Reaction Engineering Modeling of PEFC – Measurement and Simulation of Through-Plane Temperature Profile in the Cell
M. Kawase and K. Miura - Kyoto University 24
- Development of Measurement and Evaluation Technologies for Heat and Mass Transport Phenomena in Polymer Electrolyte Fuel Cells
T. Nakagaki, M. Katsuta - Waseda University
N. Kubo - Nissan Motor Co., Ltd. 30
- Study of Behavior of Liquid Water in GDL by Numerical Analysis and Experiment
G. Inoue - Kyushu University 37
- NMR Sensors for Spatial Distribution Measurements of Water-content in PEM and Current-density Generating in PEFC
K. Ogawa and Y. Yokouchi - Keio University 43
- Water Transport Analysis of a PEFC by measuring the Water Content in the Exhaust Gases
K. Shibata and Y. Yamazaki - Tokyo Institute of Technology 51
- Analysis of Impact of Water Behavior on Cell Voltage with Visualization Cell
H. Masuda, A. Yamamoto, K. Sasaki and K. Ito - Kyushu University 56
- Development of Magnetic Resonance Imaging and Soft X-ray Radiography for Water Transport Analysis in PEFC
S. Tsushima and S. Hirai - Tokyo Institute of Technology 62
- Measurement of Flow Rate Distribution between Cells in a PEFC Stack using Hydrogen Limiting Current
Y. Tsutsumi, S. Sekine, M. Eguchi and Y. Kobayashi - Ibaraki University 68
- Development of Oxygen Visualization System in PEFC
Y. Nagumo - Shimadzu Corp. 72
- Development of Analytic Method for PEFC Electrolyte Membrane for Fuel Cell by using Positron Annihilation Spectroscopy
S. Nishijima, Y. Akiyama, Y. Shibahara, H. S. Sodaye, Y. Honda and S. Tagawa - Osaka University 78
- Characteristics of Performance Degradation caused by Repetition of Cold Start of Polymer Electrode Fuel Cells and Development of Diagnostic Technology
Y. Takagi - Tokyo City University 82

- **A Degradation Mechanism of a Fuel Cell Electrode studied by Transmission Electron Microtomography**
T. Ito, U. Matsuwaki and Y. Otsuka - Toray Research Center Inc.
H. Jinnai - Graduate School of Science and Engineering, Kyoto Institute of Technology
WPI Advanced Institute for Materials Research, Tohoku University 89

Topics

- **Durability Evaluations of Present Fuel Processing System and Development of Next Generation Model for ENE FARM™**
H. Itsuki - Tokyo Gas Co., Ltd. 94
- **Performance Improvement in a Hydrogen PEFC using a Sintered Spherical Metal Powder Porous Flow Field**
T. Shudo - Hokkaido University 99
- **Development of a Unitized Reversible Cell**
A. Kato and A. Takahashi - Takasago Thermal Engineering Co., Ltd.
T. Ioroi and H. Ito - National Institute of Advanced Industrial Science and Technology
T. Yoshida - Daiki-Ataka Engineering Co., Ltd. ... 102
- **New Hydrogen Gas Purification & Storage System using Metal Hydride**
S. Miura and A. Fujisawa - Kobe Steel, Ltd. ... 108
- **Hydrogen Desorption Profiles of MgH₂-oxide Composite prepared by High-speed Planetary Ball Mill**
H. Shimoda, M. Ueda and T. Fukui - Kurimoto, Ltd.
N. Yamasaki, M. Ohyanagi and Y. Kodera - Ryukoku University ... 113
- **Fine Synthesis of Subnano-particles of Platinum that exhibit High Catalytic Activity in Oxygen Reduction Reaction**
T. Imaoka and K. Yamamoto - Keio University. ... 116
- **Development of emf-type Room-temperature H₂ Sensor composed of Layered Metal Oxides with Oxygen Defects**
T. Takeguchi - Hokkaido University ... 120
- **Rapid Thermal Cycle Durable Gas Seals for SOFC**
S. Suda - Japan Fine Ceramics Center ... 124

Report

- **Report on 112th Workshop for Members**
A. Miyahara - Fuel Cell Development Information Center ... 128
- **Visit Report of Fuel Cell Industries of Canada**
H. Morikawa - Mie High Tech Forum ... 132
- **Report on 23th Seminar –Start of Commercialization of Residential Fuel Cell–**
A. Miyahara - Fuel Cell Development Information Center ... 128

Information

- S. Nagata - Fuel Cell Development Information Center ... 142

Postscript

- K.Ito - Tokyo Gas Co., Ltd. ... 145